

380TH AIR WING GROUP [VIPER 1,2]

MISSION: #2025

**BASIC INFO**

START TIME 9-JUL-2011 0700LT (0300UTC)

TAKEOFF TIME 0710L LAND TIME 1005L

HOME FREQ AL DHAFRA 251.1AM TCN 96X AL MINHAD 250.1AM

WX RAIN SR 0531LT SS 1912LT TEMP 20 C CLD 8K WIND 100 8KTS GD VSBY

FLIGHT

FLT	CS	T#	TCN	DLNK	LSR	WPN
Viper 1	1-1	91	11X	VR11	1651	9X,AC,84L,WT,T,ECM,H,WT,84L,AC,9X
	1-2	92	12X	VR12	1652	9X,AC,84L,WT,T,ECM,H,WT,84L,AC,9X
	1-3	93	13X	VR13	1653	9X,AC,84L,WT,T,ECM,H,WT,84L,AC,9X
	1-4	94	14X	VR14	1654	9X,AC,84L,WT,T,ECM,H,WT,84L,AC,9X
Viper 2	2-1	95	15X	VR31	1655	9X,AC,84L,WT,T,ECM,H,WT,84L,AC,9X
	2-2	96	16X	VR32	1656	9X,AC,84L,WT,T,ECM,H,WT,84L,AC,9X
	2-3	97	17X	VR41	1657	9X,AC,84L,WT,T,ECM,H,WT,84L,AC,9X
	2-4	98	18X	VR42	1658	9X,AC,84L,WT,T,ECM,H,WT,84L,AC,9X

COMMS LADDER

UHF	AGCY	FREQ	VHF	AGCY	FREQ
1	Al Dhafra	251.10	1	Al Dhafra	126.50
2	Al Minhac	250.10	2	Al Minhac	118.55
3	Liwa	250.95	3	Liwa	119.30
4	Khasab	250.00	4	Khasab	124.35
5	Darkstar	256.00	5	Viper 1	131.10
6	Magic	264.00	6	Viper 2	131.20
7	Wizard	265.00	7	Viper 3	131.30
8	Texaco 3	257.30	8	Viper 4	131.40
9	Texaco 4	257.40	9	Dodge 1	132.10
10	Texaco 5	257.50	10	Dodge 2	132.20
11	Texaco 6	257.60	11	Dodge 3	132.30
12	Texaco 7	257.70	12	Dodge 4	132.40
13	Enfield	231.10	13	Hawg 1	141.10
14	Springfield	232.10	14	Hawg 2	141.20
15	Skyfield	233.10	15	Hawg 3	141.30
16	Starfield	234.10	16	Hawg 4	141.40
17			17	Ford 1	142.10
18			18	Ford 2	142.20
19			19	Ford 3	142.30
20			20	Ford 4	142.40

ALT AFLD

AFLD	FREQ	COORD
Sharjah	250.1AM	N25°20'20" E55°30'14"
B.Lengeh	250.0AM	N26°31'58" E54°49'40"

FLIGHT WAYPOINT

WP	ID	TIME	SPEED	ALT	ACT
0	ADB	0710L	0		Takeoff
1	DEP	0713L	0.60M	5K	Outbound
2	RV	0718L	0.60M	25K	Regroup
3	PRE	0735L	0.80M	26K	Ingress
4	AAR	0745L	0.80M	26K	Refuel
5	REG	0820L	0.80M	30K	Regroup
6	TGT	0840L	0.80M	30K	Attack
7	EGR	0925L	0.75M	25K	Egress
8	RET	0950L	0.70M	15K	Inbound
9	ARR	1000L	0.40M	3K	Arrival
10	RWY	1005L	0		Landing

SUPPORT

FLT	A/C	TASK	A/A	FREQ
Darkstar	E-3A	AWACS		UHF CH5
Wizard	E-3A	AWACS		UHF CH7
Texaco 3	KC-135	Refuel	57X	UHF CH8
Texaco 4	KC-135	Refuel	58X	UHF CH9
Texaco 5	KC-135	Refuel	59X	UHF CH10
Texaco 6	KC-135	Refuel	60X	UHF CH11
Texaco 7	KC-135	Refuel	61X	UHF CH12

380TH AIR WING GROUP [DODGE 1,2]

MISSION: #2025

**BASIC INFO**

START TIME 9-JUL-2011 0700LT (0300UTC)

TAKEOFF TIME 0714L LAND TIME 1005L

HOME FREQ AL DHAFRA 251.1AM TCN 96X AL MINHAD 250.1AM

WX RAIN SR 0531LT SS 1912LT TEMP 20 C CLD 8K WIND 100 8KTS GD VSBY

FLIGHT

FLT	CS	T#	TCN	DLNK	LSR	WPN
Dodge 1	1-1	81	21X	DE11	1661	9P,WT,AC,84L,N,84L,T,84L,AC,WT,9P
	1-2	82	22X	DE12	1662	9P,WT,AC,84L,N,84L,T,84L,AC,WT,9P
Dodge 2	2-1	83	23X	DE21	1663	9P,WT,AC,84L,N,84L,T,84L,AC,WT,9P
	2-2	84	24X	DE22	1664	9P,WT,AC,84L,N,84L,T,84L,AC,WT,9P

COMMS LADDER

UHF	AGCY	FREQ	VHF	AGCY	FREQ
1	Al Dhafra	251.10	1	Al Dhafra	126.50
2	Al Minhac	250.10	2	Al Minhac	118.55
3	Liwa	250.95	3	Liwa	119.30
4	Khasab	250.00	4	Khasab	124.35
5	Darkstar	256.00	5	Viper 1	131.10
6	Magic	264.00	6	Viper 2	131.20
7	Wizard	265.00	7	Viper 3	131.30
8	Texaco 3	257.30	8	Viper 4	131.40
9	Texaco 4	257.40	9	Dodge 1	132.10
10	Texaco 5	257.50	10	Dodge 2	132.20
11	Texaco 6	257.60	11	Dodge 3	132.30
12	Texaco 7	257.70	12	Dodge 4	132.40
13	Enfield	231.10	13	Hawg 1	141.10
14	Springfield	232.10	14	Hawg 2	141.20
15	Skyfield	233.10	15	Hawg 3	141.30
16	Starfield	234.10	16	Hawg 4	141.40
17			17	Ford 1	142.10
18			18	Ford 2	142.20
19			19	Ford 3	142.30
20			20	Ford 4	142.40

SUPPORT

FLT	A/C	TASK	A/A	FREQ
Darkstar	E-3A	AWACS		UHF CH5
Wizard	E-3A	AWACS		UHF CH7
Texaco 3	KC-135	Refuel	57X	UHF CH8
Texaco 4	KC-135	Refuel	58X	UHF CH9
Texaco 5	KC-135	Refuel	59X	UHF CH10
Texaco 6	KC-135	Refuel	60X	UHF CH11
Texaco 7	KC-135	Refuel	61X	UHF CH12

FLIGHT WAYPOINT

WP	ID	TIME	SPEED	ALT	ACT
0	ADB	0714L	0		Takeoff
1	DEP	0717L	0.60M	5K	Outbound
2	RV	0722L	0.60M	25K	Regroup
3	PRE	0735L	0.80M	26K	Ingress
4	AAR	0745L	0.80M	26K	Refuel
5	REG	0820L	0.80M	30K	Regroup
6	TGT	0840L	0.80M	30K	Attack
7	EGR	0925L	0.75M	25K	Egress
8	RET	0950L	0.70M	15K	Inbound
9	ARR	1000L	0.40M	3K	Arrival
10	RWY	1005L	0		Landing

TARGET WAYPOINT

#	ID	COORD	ALT (FT)

ALT AFLD

AFLD	FREQ	COOR
Sharjah	250.1AM	N25°20'20" E55°30'14"
B.Lengeh	250.0AM	N26°31'58" E54°49'40"

380TH AIR WING GROUP [FORD 1,2]

MISSION: #2025

**BASIC INFO**

START TIME 9-JUL-2011 0700LT (0300UTC)

TAKEOFF TIME 0710L LAND TIME 0953L

HOME FREQ AL DHAFRA 251.1AM TCN 96X AL MINHAD 250.1AM

WX RAIN SR 0531LT SS 1912LT TEMP 20 C CLD 8K WIND 100 8KTS GD VSBY

FLIGHT

FLT	CS	T#	TCN	DLNK	LSR	WPN
Ford 1	1-1	201		FD11		AC,WT,AC,AB,AB,,AB,AB,AC,WT,AC
	1-2	202		FD12		AC,WT,AC,AB,AB,,AB,AB,AC,WT,AC
Ford 2	2-1	203		FD21		AC,WT,AC,AB,AB,,AB,AB,AC,WT,AC
	2-2	204		FD22		AC,WT,AC,AB,AB,,AB,AB,AC,WT,AC

COMMS LADDER

UHF	AGCY	FREQ	VHF	AGCY	FREQ
1	Al Dhafra	251.10	1	Al Dhafra	126.50
2	Al Minhac	250.10	2	Al Minhac	118.55
3	Liwa	250.95	3	Liwa	119.30
4	Khasab	250.00	4	Khasab	124.35
5	Darkstar	256.00	5	Viper 1	131.10
6	Magic	264.00	6	Viper 2	131.20
7	Wizard	265.00	7	Viper 3	131.30
8	Texaco 3	257.30	8	Viper 4	131.40
9	Texaco 4	257.40	9	Dodge 1	132.10
10	Texaco 5	257.50	10	Dodge 2	132.20
11	Texaco 6	257.60	11	Dodge 3	132.30
12	Texaco 7	257.70	12	Dodge 4	132.40
13	Enfield	231.10	13	Hawg 1	141.10
14	Springfield	232.10	14	Hawg 2	141.20
15	Skyfield	233.10	15	Hawg 3	141.30
16	Starfield	234.10	16	Hawg 4	141.40
17			17	Ford 1	142.10
18			18	Ford 2	142.20
19			19	Ford 3	142.30
20			20	Ford 4	142.40

SUPPORT

FLT	A/C	TASK	A/A	FREQ
Darkstar	E-3A	AWACS		UHF CH5
Wizard	E-3A	AWACS		UHF CH7
Texaco 3	KC-135	Refuel	57X	UHF CH8
Texaco 4	KC-135	Refuel	58X	UHF CH9
Texaco 5	KC-135	Refuel	59X	UHF CH10
Texaco 6	KC-135	Refuel	60X	UHF CH11
Texaco 7	KC-135	Refuel	61X	UHF CH12

FLIGHT WAYPOINT

WP	ID	TIME	SPEED	ALT	ACT
0	AMB	0710L	0		Takeoff
1	DEP	0712L	0.60M	5K	Outbound
2	RV	0716L	0.60M	25K	Regroup
3	PRE	0725L	0.80M	28K	Ingress
4	AAR	0735L	0.80M	28K	Refuel
5	REG	0820L	0.80M	31K	Regroup
6	TAR	0840L	0.80M	35K	TARCAP
7	EGR	0925L	0.75M	25K	Egress
8	RET	0945L	0.70M	15K	Inbound
9	ARR	0950L	0.40M	3K	Arrival
10	RWY	0953L	0		Landing

TARGET WAYPOINT

WP	ID	COORD	ALT	RMKS

ALT AFLD

AFLD	FREQ	COOR
Sharjah	250.1AM	N25°20'20" E55°30'14"
B.Lengeh	250.0AM	N26°31'58" E54°49'40"

380TH AIR WING GROUP [HAWG 1,2]

MISSION: #2026

**BASIC INFO**

START TIME 9-JUL-2011 0700LT (0300UTC)

TAKEOFF TIME 0712L LAND TIME 0950L

HOME FREQ AL DHAFRA 251.1AM TCN 96X AL MINHAD 250.1AM

WX RAIN SR 0531LT SS 1912LT TEMP 20 C CLD 8K WIND 100 8KTS GD VSBY

FLIGHT

FLT	CS	T#	TCN	DLNK	LSR	WPN
Hawg 1	1-1	171	31X	HG11	1671	2*9M,T,3*65D,38L,38L,,38L,38L,3*65D,C97,ECM
	1-2	172	32X	HG12	1672	2*9M,T,3*65D,38L,38L,,38L,38L,3*65D,C97,ECM
Hawg 2	2-1	173	33X	HG21	1673	2*9M,T,3*65D,38L,38L,,38L,38L,3*65D,C97,ECM
	2-2	174	34X	HG22	1674	2*9M,T,3*65D,38L,38L,,38L,38L,3*65D,C97,ECM

COMMS LADDER

UHF	AGCY	FREQ	VHF	AGCY	FREQ
1	Al Dhafra	251.10	1	Al Dhafra	126.50
2	Al Minhac	250.10	2	Al Minhac	118.55
3	Liwa	250.95	3	Liwa	119.30
4	Khasab	250.00	4	Khasab	124.35
5	Darkstar	256.00	5	Viper 1	131.10
6	Magic	264.00	6	Viper 2	131.20
7	Wizard	265.00	7	Viper 3	131.30
8	Texaco 3	257.30	8	Viper 4	131.40
9	Texaco 4	257.40	9	Dodge 1	132.10
10	Texaco 5	257.50	10	Dodge 2	132.20
11	Texaco 6	257.60	11	Dodge 3	132.30
12	Texaco 7	257.70	12	Dodge 4	132.40
13	Enfield	231.10	13	Hawg 1	141.10
14	Springfield	232.10	14	Hawg 2	141.20
15	Skyfield	233.10	15	Hawg 3	141.30
16	Starfield	234.10	16	Hawg 4	141.40
17			17	Ford 1	142.10
18			18	Ford 2	142.20
19			19	Ford 3	142.30
20			20	Ford 4	142.40

SUPPORT

FLT	A/C	TASK	A/A	FREQ
Darkstar	E-3A	AWACS		UHF CH5
Wizard	E-3A	AWACS		UHF CH7
Texaco 3	KC-135	Refuel	57X	UHF CH8
Texaco 4	KC-135	Refuel	58X	UHF CH9
Texaco 5	KC-135	Refuel	59X	UHF CH10
Texaco 6	KC-135	Refuel	60X	UHF CH11
Texaco 7	KC-135	Refuel	61X	UHF CH12

FLIGHT WAYPOINT

WP	ID	TIME	SPEED	ALT	ACT
0	AMB	0712L	0		Takeoff
1	DEP	0715L	0.40M	5K	Outbound
2	RV	0720L	0.40M	15K	Regroup
3	PRE	0732L	0.50M	16K	Ingress
4	AAR	0742L	0.50M	16K	Refuel
5	CP	0810L	0.40M	15K	Fence In
6	CAS	0815L	0.40M	15K	CAS
7	EGR	0922L	0.50M	15K	Egress
8	RET	0940L	0.50M	15K	Inbound
9	ARR	0947L	0.30M	3K	Arrival
10	RWY	0950L	0		Landing

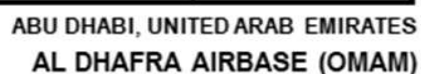
TARGET WAYPOINT

WP	ID	COORD	ALT	RMKS

ALT AFLD

AFLD	FREQ	COOR
Sharjah	250.1AM	N25°20'20" E55°30'14"
B.Lengeh	250.0AM	N26°31'58" E54°49'40"

AL DHAFRA AIRBASE (OMAM)
ABU DHABI, UNITED ARAB EMIRATES



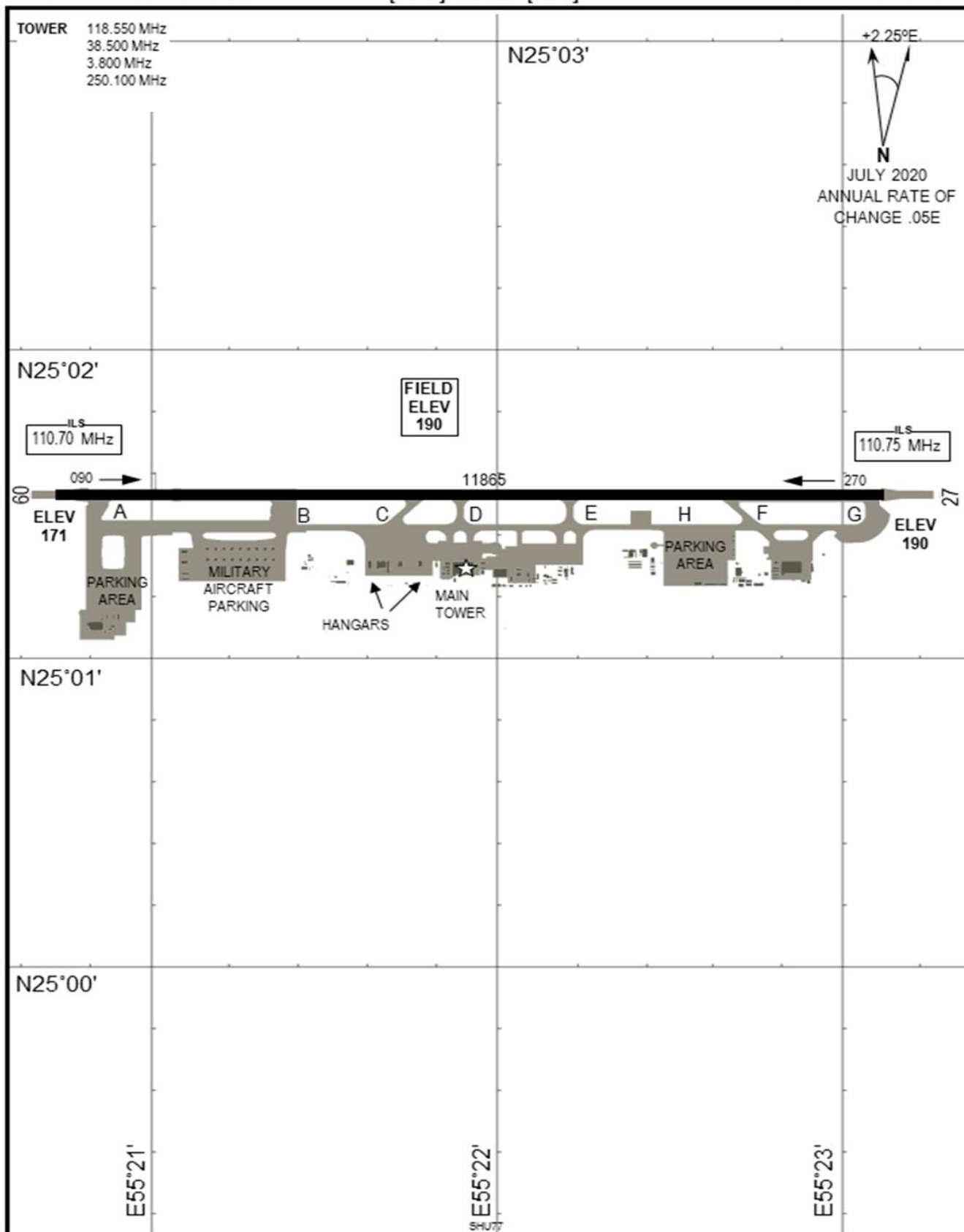
KNEEBOARD PAGE 5



AIRPORT DIAGRAM

[USAF] AFD-3351 [ICAO]

AL MINHAD AIRBASE (OMDM)
AL MINHAD, DUBAI, UAE



AIRPORT DIAGRAM

NOT FOR REAL NAVIGATION

AL MINHAD, DUBAI, UAE
AL MINHAD AIRBASE (OMDM)

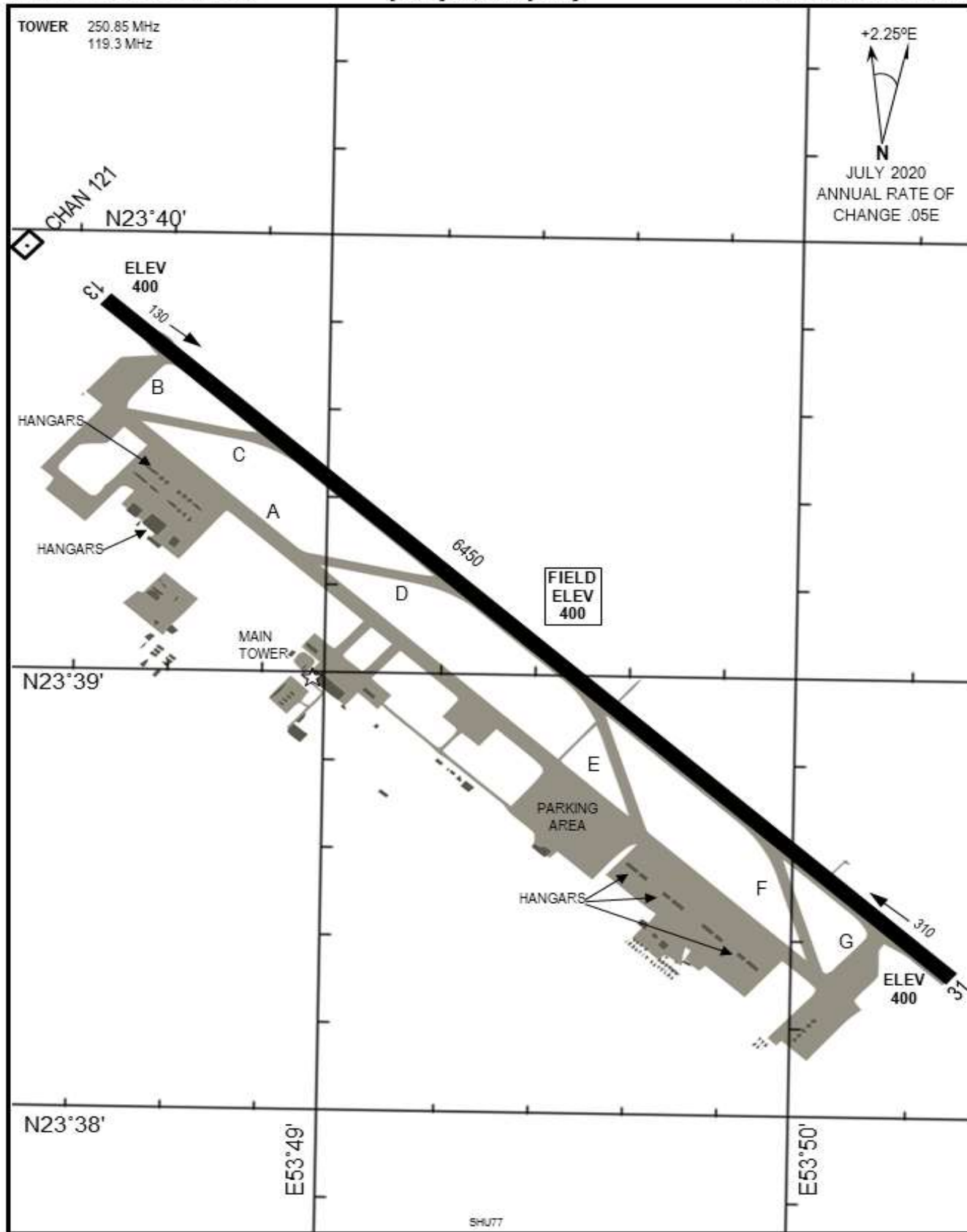
Source: CombatWombat's Airfield Diagrams: Persian Gulf



AIRPORT DIAGRAM

[USAF] AFD-3351 [ICAO]

LIWA AIRBASE (OMLW)
LIWA, UNITED ARAB EMIRATES



AIRPORT DIAGRAM

NOT FOR REAL NAVIGATION

AL MAKTOUM, JEBEL ALI, UAE
AL MAKTOUM INTERNATIONAL(OMDW)

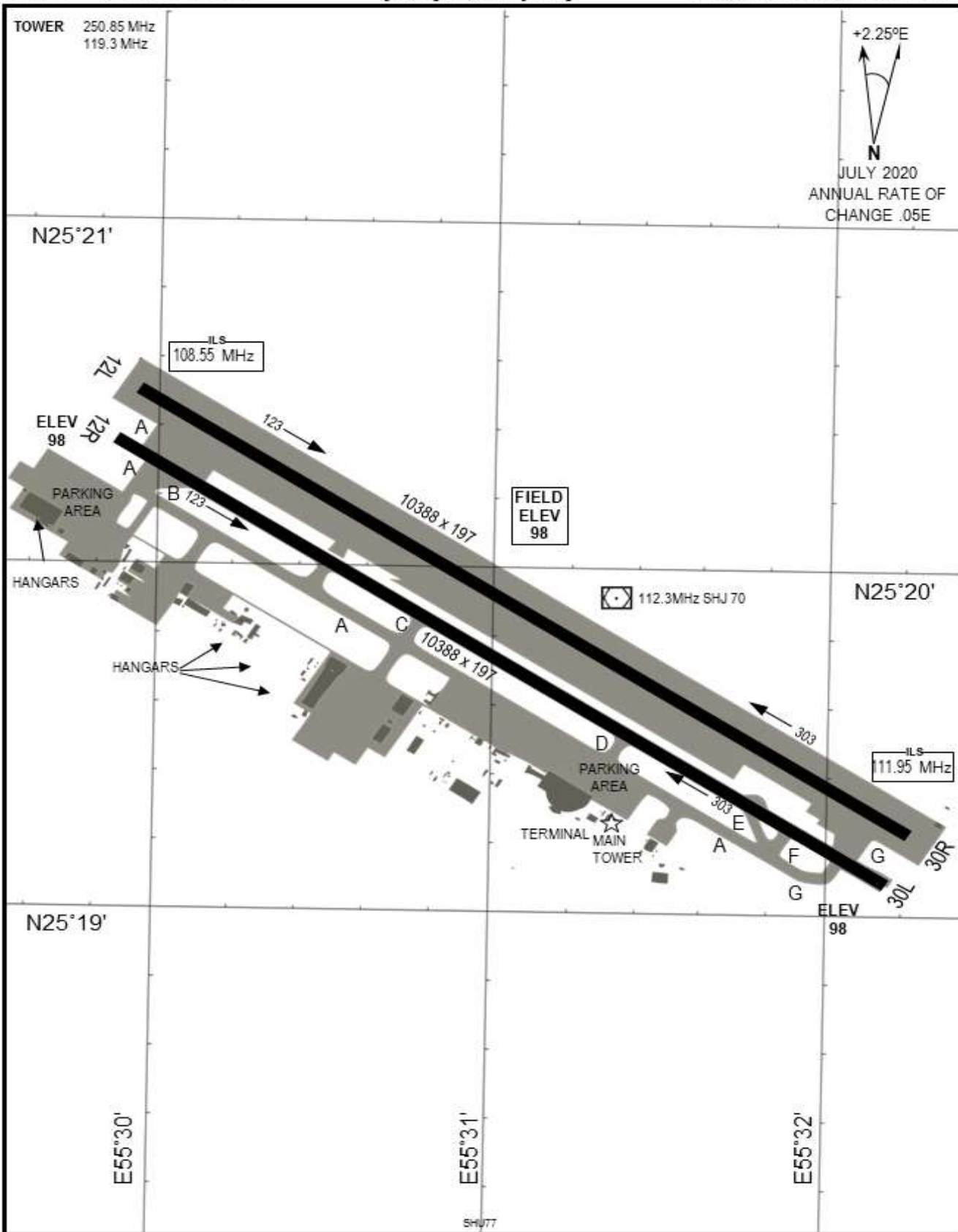
Source: CombatWombat's Airfield Diagrams: Persian Gulf



AIRPORT DIAGRAM

[USAF] AFD-3351 [ICAO]

SHARJAH INTL. (OMSJ)
SHARJAH, UNITED ARAB EMIRATES



AIRPORT DIAGRAM

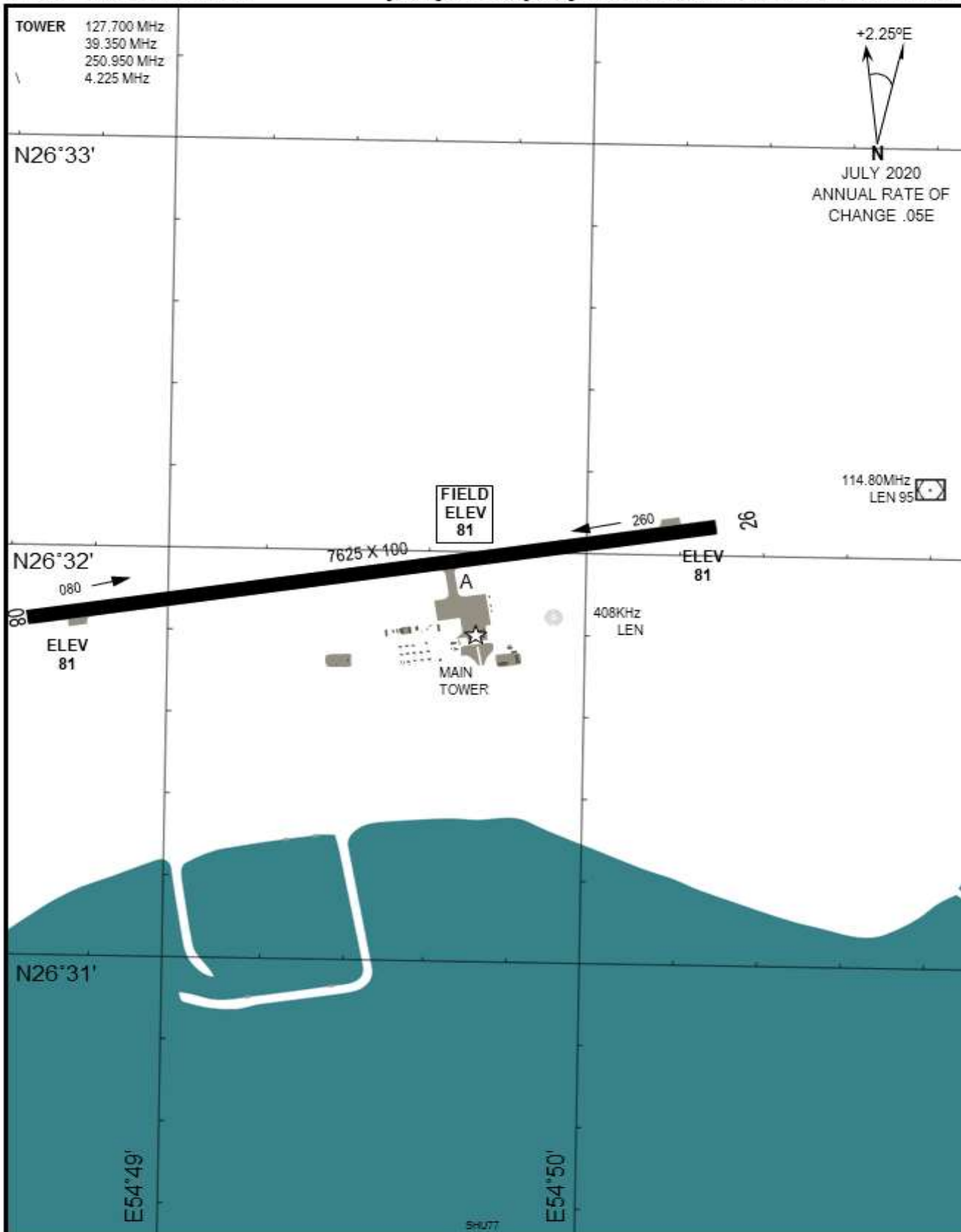
NOT FOR REAL NAVIGATION

SHARJAH, UNITED ARAB EMIRATES
SHARJAH INTL. (OMSJ)

Source: CombatWombat's Airfield Diagrams: Persian Gulf



AIRPORT DIAGRAM [USAF] AFD-3351 [ICAO] BANDAR LENGEH, HORMOZGAN PROVINCE IRAN



AIRPORT DIAGRAM BANDAR LENGEH, HORMOZGAN PROVINCE IRAN
NOT FOR REAL NAVIGATION BANDAR LENGEH(OIBL)

Source: CombatWombat's Airfield Diagrams: Persian Gulf

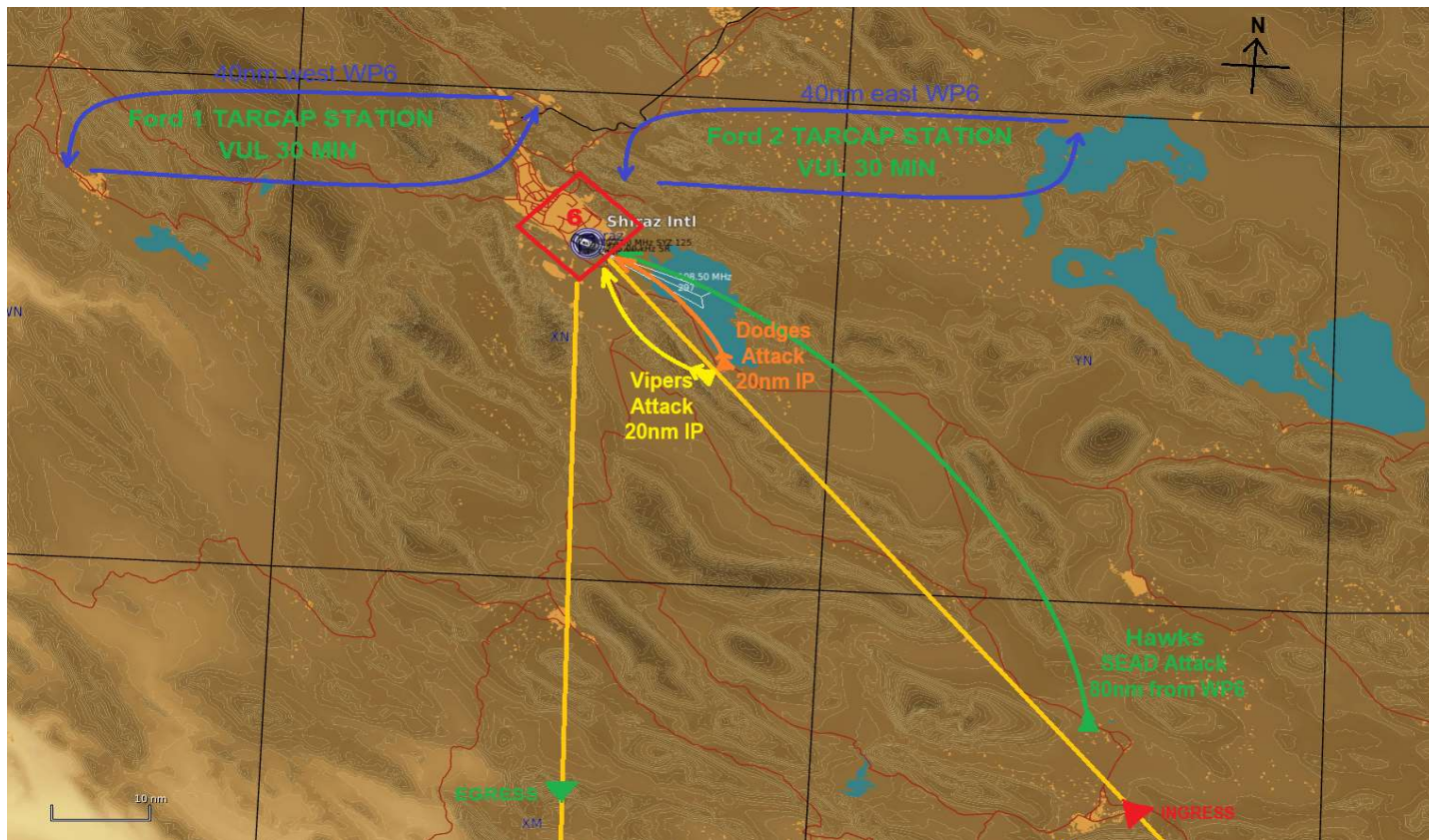


FLIGHT PLAN

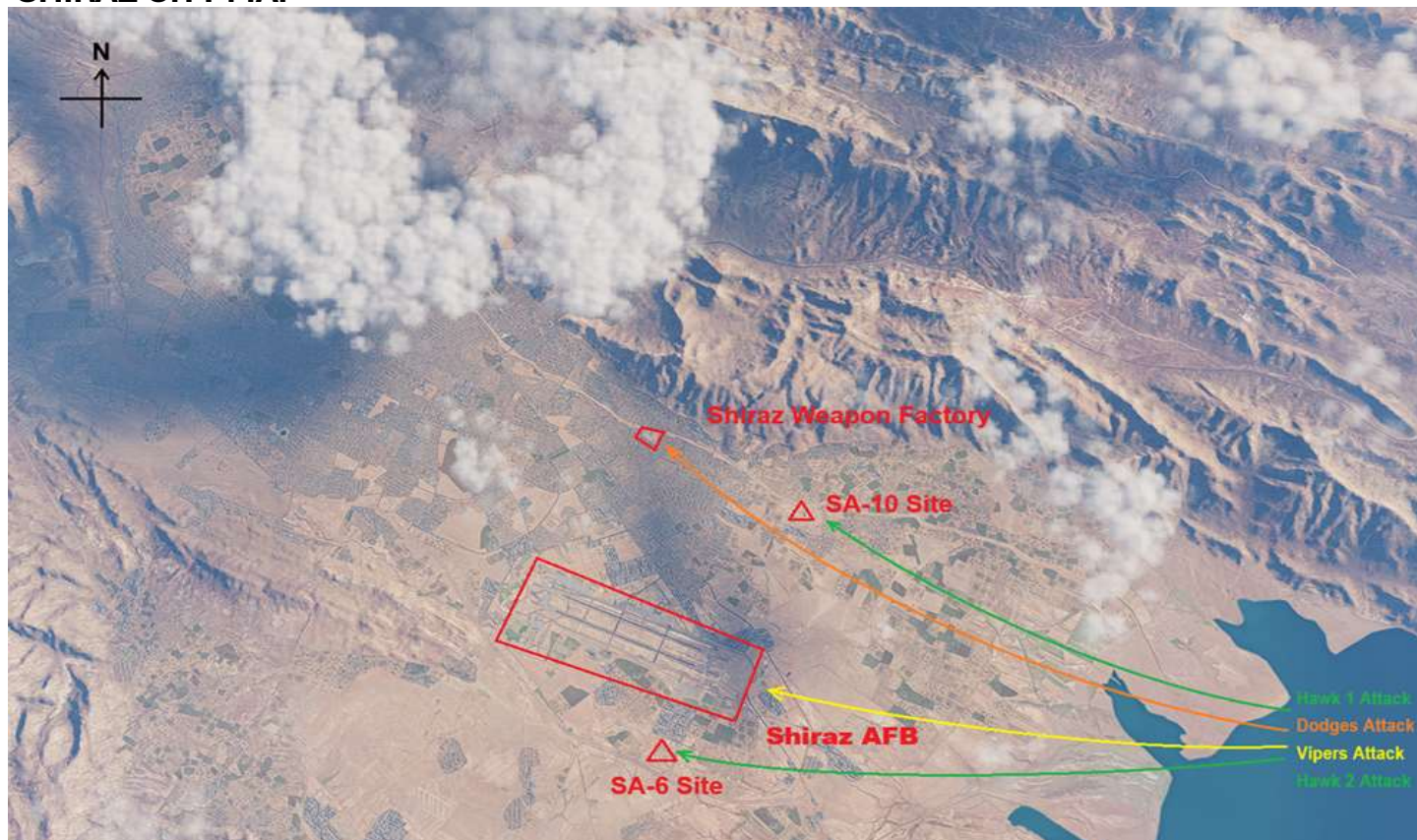




ATTACK PLAN

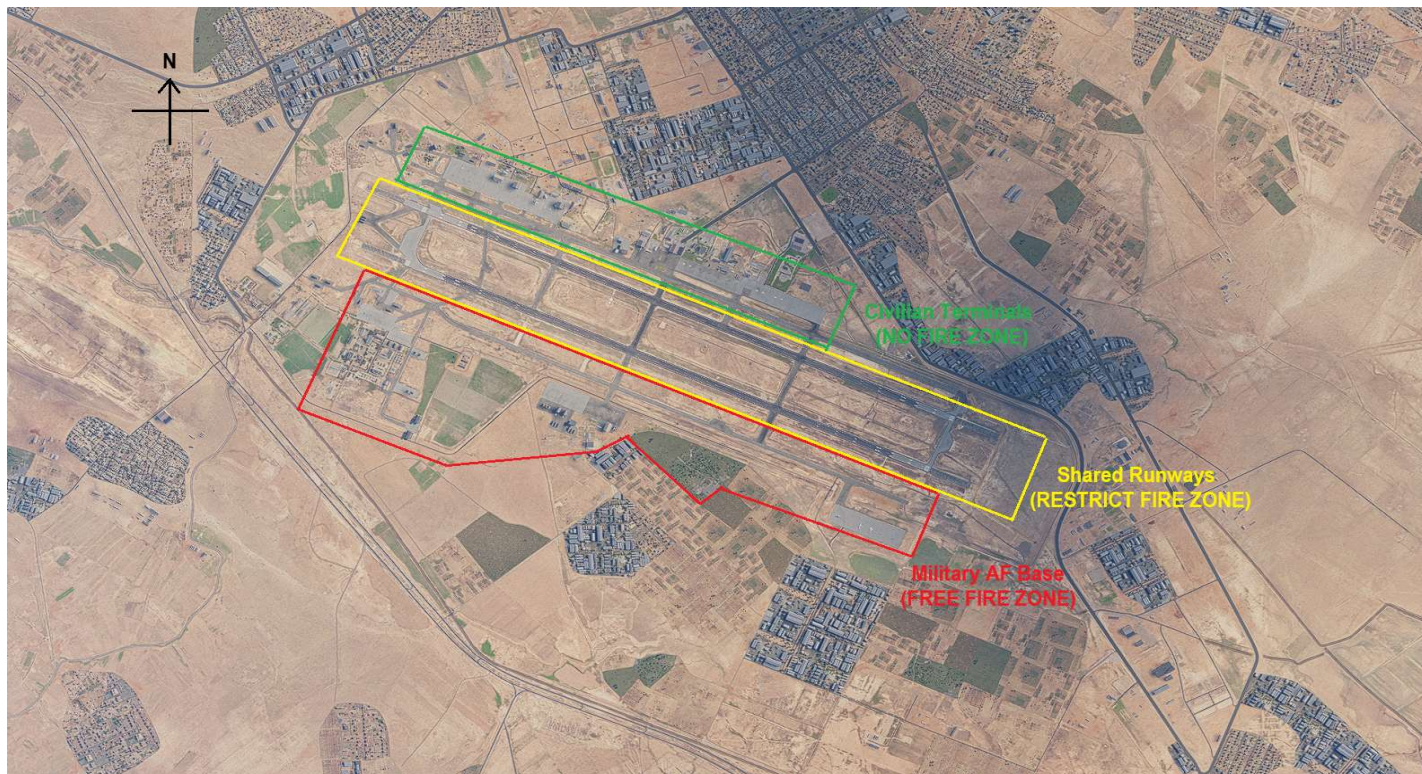


SHIRAZ CITY MAP





SHIRAZ INTERNATIONAL AIRPORT / SHIRAZ AFB LAYOUT



SHIRAZ AFB TARGETS (VIPERS)



NOTE: Viper 1 attack PRIMARY fixed targets (A1-A8)
Viper 2 attack TERTIARY mobile targets (military aircraft, undesignated)



SHIRAZ WEAPON FACTORY



SHIRAZ WEAPON FACTORY TARGETS (DODGES)





BANDAR ABBAS SATELLITE IMAGE



BANDAR ABBAS CITY CAS CHART (HAWGS)

